



SAMURAI TOURS

Adventures in Discovering Traditional Japan

www.samuraitours.com

Northern Japan Onsen



15 Days / 14 Nights

Northern Japan Onsen

Tour Overview

Enjoy the good life - Japanese style. Our Onsen tours only stay at Onsens. On the Northern Japan Onsen tour, you will enjoy the best local food specialties and the famous Japanese hospitality while relaxing in some of the best onsens in Japan and visiting out-of-the-way destinations.

Destinations

Tokyo, Higashiyama Onsen, Aizu-Wakamatsu, Yamadera Temple, Zao Onsen, Matsushima, Tsunagi Onsen, Kakunodate, Hakodate, Noboribetsu Onsen, Akan Crane Center, Akan Onsen, Iozan, Lake Masshu, Utoro Onsen, Shiretoko Peninsula Cruise, Shiretoko Goko Walk

Tour Factors



Cultural Immersion



Pace



Physical Activity



Tour Details

Visiting an onsen is the Japanese version of the good life. At Japanese onsens, you will enjoy excellent food and experience the famous Japanese hospitality. And don't forget the Japanese baths. The Japanese have raised bathing to a whole new level, and they are an important experience that should be included in every visit to Japan. And in between all of this, we will be visiting some of Japan's most remote sightseeing destinations. If you like Japanese food and enjoy the Japanese baths, this tour should not be missed.

In Aizu-Wakamatsu you will have the opportunity to explore an old Samurai city full of history and Samurai tradition. At Kakunodate, we will visit some of the best preserved samurai homes in Japan.

You will soak in the thermally-heated waters of some of Japan's best onsen, including Zao Onsen with its sulfuric waters that are among the most acidic in Japan with a PH value of close to 1.

You will enjoy the natural charm of Lake Akan, the secluded beauty of Shiretoko and Matsushima, ranked as one of the three most scenic spots in Japan.

You will explore the morning market of Hakodate, where you can have the local specialties of crab, sea urchin or squid prepared for you for breakfast. You will visit the Akan International Crane Center where research is being done to bring the cranes back from the brink of extinction.

PLEASE NOTE: Tattoos in Japan are stigmatized, and therefore tattoos are not widely accepted at onsen baths in Japan. If you have tattoos, you may not be allow

Map

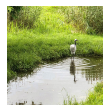


📍Destinations



Aizu-Wakamatsu

Samurai Mansion, Sazaedo Pagoda, Nisshin Samurai School, Tsuruga Castle



Akan Crane Center

Akan Crane Center



Yamadera Temple

Yamadera Temple



Lake Akan Onsen

Lake Akan Onsen



Zao Onsen

Zao Onsen



Iozan

Iozan



Matsushima

Matsushima Bay Cruise, Godaido,
Zuiganji Temple



Lake Masu

Lake Masu



Tsunagi Onsen

Tsunagi Onsen



Utoro Onsen

Shiretoko Peninsula Cruise



Kakunodate

Kakunodate Denshokan Museum,
Samurai Residences



Shiretoko

Shiretoko Goko Walk



Noboribetsu Onsen

Noboribetsu Onsen

Itinerary

Walking level
descriptions:
Light – 0 to 2 miles
on level ground

Medium – 2 to 4 miles on level ground or 0 to 2 miles on hilly ground

Heavy – 4 to 6 miles on level ground or 2 to 4 miles on hilly ground

Day 1 Arrive in Tokyo, Travel by limousine bus to the hotel

After clearing customs and immigration, you will be met at Tokyo's Narita Airport or Haneda Airport by a Samurai Tours meeting staff member. They will help you board the bus to the hotel. After checking in, the evening is free. No meals are included.

Travel: 1 to 1 1/2 Hours; Walking: Light

Day 2 Travel to Aizu-Wakamatsu; Aizu-Wakamatsu - Samurai Mansion; Overnight Higashiyama Onsen

Before leaving Tokyo, you will need to prepare your luggage for transfer to Aizu-Wakamatsu. We will be traveling to Aizu-Wakamatsu with an overnight bag only. Please prepare your overnight bag for 2 days and 1 night. After breakfast you will start the day with a Welcome/Orientation meeting, and then travel to Aizu-Wakamatsu. Aizu Wakamatsu is a former castle town with a long Samurai tradition. After arriving at Aizu Wakamatsu and dropping off our luggage, we will visit the Aizu Bukeyashiki (Samurai Mansion). This was the home of an important Samurai, and therefore is very large with dozens of different rooms and sections including gardens, guest rooms, a tea house, an archery range, and a rice mill. Breakfast at the hotel and dinner at the ryokan included.

Travel: 3 Hours; Walking: Medium

Day 3 Aizu-Wakamatsu - Sazaedo Pagoda, Nisshin Samurai School, Tsuruga Castle

Today we will further explore the Samurai city of Aizu Wakamatsu. We will start at the Sazaedo Tower. Completed in 1796, the wooden Sazaedo temple isn't huge but what makes it unique is its double helix staircase on which the people going up and the people going down never pass each other. Next, we will tour the Samurai School where the children of the Samurai attended. In the afternoon we will visit Tsuruga Castle, originally built in 1384. Tsuruga Castle was one of the last strongholds of the Boshin War. However, it was destroyed by Samurai still loyal to the Tokugawa Shogunate after the Boshin War of 1868, a rebellion against the newly formed Meiji government. The castle was rebuilt as a concrete reconstruction in the 1960s, and in renovation works completed in 2011 the color of the roof tiles was changed from grey to the original red tiles. The inside of the castle houses a museum with displays depicting the history of the castle and the Samurai lifestyle. After touring the castle, we will return to the ryokan to retrieve your main luggage. Breakfast at the ryokan and dinner at the ryokan included.

Travel: 1 Hour;; Walking: Heavy

Day 4 Travel to Yamadera, Tour Yamadera, Travel to Zao Onsen

After breakfast we will travel to Yamadera. Yamadera is a scenic temple located in the mountains northeast of Yamagata City. The temple grounds extend high up a steep mountainside (the name Yamadera literally translates to "mountain temple"), from where there are scenic views overlooking the valley below. The temple was created over a thousand years ago in 860 as a temple of the Tendai sect. We will finish the day by continuing to Zao Onsen where we will stay for

the next two nights. Zao Onsen is at an altitude of about 900 meters (3000 feet) on the slopes of Mount Zao, an active volcano. During the winter months, Zao is one of Japan's leading ski resorts. The sulfuric waters at Zao Onsen are among the most acidic in Japan with a pH value close to 1. Before leaving Aizu-Wakamatsu, you will send your main luggage ahead to Zao Onsen. You will need enough items for 2 days and 1 night. Breakfast and dinner at the ryokan included.

Travel: 3 1/2 Hours; Walking: Heavy

Day 5 Zao Onsen - Free Day

Today is a free day to enjoy Zao Onsen. Take the gondola to the top of Mt Zao, an active volcano. From here you can get a great view of the surrounding area. And for the more energetic, there are many easy walking trails around the mountain. You will also be able to get a view of Okama Crater, a beautiful crater lake at the top of the mountain. Or visit one of the many public baths located around the onsen. Breakfast and dinner at the hotel are included.

Travel: N/A Walking: TBD

Day 6 Travel to Sendai; Matsushima - Matsushima Bay Cruise, Godaigo, Zuiganji Temple; Travel to Tsunagi Onsen

After breakfast, we will continue our adventure by traveling to Sendai, dropping off our overnight bags, and continuing to Matsushima. For hundreds of years, Matsushima has been celebrated as one of the Japan's three most scenic view along with Miyajima and Amanohashidate. Matsushima Bay has more than 200 small islands covered with pine trees, and the best way to see these is by boat. After arriving at Matsushima, we will tour Zuiganji. Zuiganji was a former Tendai sect temple founded in 828, but later changed to a Zen temple in the 13th century. After years of decline, Zuiganji was restored to prominence by the feudal lord Date Masamune who rebuilt it as his family temple in 1609. We will then visit Godaigo. Godaigo was originally built in 807 and contains five statues which were enshrined there by the same priest who founded Zuiganji. The statues are displayed to the public only once every 33 years, and were last displayed in 2006. The present building is a 1604 reconstruction by Date Masamune. Later in the afternoon, you will board the boat for a cruise around Matsushima Bay. After returning to Sendai, we will travel on to Tsunagi Onsen. With a history stretching back 900 years, Tsunagi Onsen is a popular hot spring on the outskirts of Morioka. Before leaving Zao Onsen, you will send your main luggage ahead to Tsunagi Onsen. You will need enough items for 2 days and 1 night. Breakfast and dinner at the ryokan included.

Travel: 3 1/2 Hours; Walking: Medium

Day 7 Travel to Kakunodate; Kakunodate - Kakunodate Denshokan Museum, Samurai Residences, Return to Tsunagi Onsen

After breakfast, we will continue our adventure by traveling to Kakunodate. Kakunodate is a former castle town. And while the castle no longer exists, the samurai tradition is still strong. There were two distinct sections of Kakunodate: the merchant district and the samurai district as designed in the Edo Period. Today, the samurai district has some of the best preserved examples of samurai architecture anywhere in Japan. We will tour two homes: the Aoyogi and the Ishiguro homes. The Aoyogi home is the largest in Kakunodate, and includes multiple buildings with museum collections documenting the samurai traditions and history in Kakunodate. The area open to visitors at the Ishiguro home is limited because the Ishiguro family still maintains a residence in the home. We will finish the day at the Denshokan museum. This museum has numerous local arts and handicrafts on display, the most prominent being items made from cherry tree bark. During the cold winter months, the samurai would earn extra income by making these items. In the afternoon, we will return to Tsunagi Onsen for the evening. Breakfast and dinner at the ryokan is

included.

Travel: 3 1/2 Hours; Walking: Medium

Day 8 Travel to Noboribetsu Onsen

Before leaving Tsunagi Onsen, you will need to send your main luggage to Lake Akan. You will need to take whatever you will need for three days/two nights with you. After breakfast, we will travel to Noboribetsu Onsen, one of Japan's most popular onsen. Breakfast and dinner at the accommodations are included.

Travel: 6 Hours; Walking: Medium

Day 9 Upopoy Ainu National Museum

Today we will visit the nearby Upopoy National Ainu Museum where we will learn more about and experience Ainu culture. Breakfast and dinner at the ryokan included.

Travel: 1 Hour Walking: Heavy

Day 10 Travel to Akan International Crane Center; Travel to Akan Onsen

After breakfast, we will travel to Kushiro and then on to the Akan International Crane Center. It was once thought the cranes were extinct. However, about 50 years ago, a few cranes were found, and extensive efforts were made to bring them back from the brink of extinction. While much work remains to be done, the crane population has stabilized and is even growing. In the afternoon, we will continue on to Akanko Onsen where we will be staying for the evening. Before leaving Noboribetsu Onsen, we will send the luggage to Utoro Onsen. You will need enough items for 3 days and two nights. Breakfast and dinner at the accommodations are included.

Travel: 6 1/2 Hours; Walking: Light

Day 11 Free Day at Lake Akan

The day is free to enjoy the quiet and solitude of Lake Akan. Visit the Ainu dance theater to enjoy a demonstration of traditional Ainu dances. The Ainu were the original inhabitants of Japan. Or take a cruise on Lake Akan, where you can see Marimo. Marimo is a ball-shaped algae that is only found at Lake Akan. Or take an easy forest walk along the shores of the lake to a small geothermal area. Breakfast and dinner at the accommodation are included.

Travel: 1 Hour; Walking: Medium

Day 12 Akan National Park - Lake Masshu, Iozan; Travel to Utoro Onsen

Today, before traveling to Utoro Onsen we will visit two popular locations in Akan National Park; As soon as we arrive, you will discover how Iozan (Sulphur Mountain) got its name. Next we will travel to Lake Masshu, considered by many to be one of Japan's most beautiful lakes because of its clear, deep blue water. But the lake is shy, and is often shrouded by fog. In the afternoon, we will travel to Utoro Onsen where we will be staying. Breakfast and dinner at the accommodations are included.

Travel: 3 1/2 Hours; Walking: Light

Day 13 Shiretoko National Park - Oshinkoshin Waterfall, Shiretoko Peninsula Cruise; Shiretoko Goko Nature Walk

Today we will explore the remote and beautiful Shiretoko National Park. Shiretoko is an ancient Ainu word meaning 'edge of the world'. Shiretoko National Park is famous in Japan for its beautiful scenery and abundant wildlife including deer, bear and foxes. In the morning, we will start with a quick stop at Oshinkoshin Waterfalls, included in the list of 100 Best Waterfalls in Japan. Next we will take a sightseeing cruise along the Shiretoko peninsula where we can see the dramatic and spectacular coastline with its tall cliffs and waterfalls and the mountains in the background. In the afternoon, we will take an easy 3km (2 mile) hike around the Shiretoko-go-ko area. (PLEASE NOTE: Depending on weather conditions, the boat cruise may be cancelled. The walk around Shiretoko Goko is flat, but the trails are not paved.) Buffet breakfast and buffet dinner at the hotel included.

Travel: 1 Hour; Walking: Heavy

Day 14 Travel to Tokyo

Today is a travel day to Tokyo. You will have some free time in Tokyo in the afternoon. We will enjoy the Sayonara dinner in the evening. Breakfast at the accommodation and dinner at a local restaurant.

Travel: 5 Hours; Walking: Light

Day 15 Return Home

It's time to say "sayonara" (Goodbye). Breakfast at the accommodation is included.

Travel: 1 to 1/2 Hours; Walking: Light

Dates & Pricing

Dates	Price (land only) / Single Supplement (All prices are per Person)	Status
Sep 28, 2025 - Oct 12, 2025	¥1,092,641/ ¥169,157	Full
Jun 7, 2026 - Jun 21, 2026	¥1,133,109/ ¥178,060	Available
Sep 27, 2026 - Oct 11, 2026	¥1,133,109/ ¥178,060	Available

Add-On Tours

Our tours and tour itineraries are the best, but as the saying goes, “you can’t make everyone happy all of the time”. There may a specific destination or a specific experience you may want to include in your visit to Japan that may not be included your tour. Choose from our Add On tours to include your interests and make your Japan tour even better.

Click [HERE](#) to view all of the Add-On Tours.

Or, use the arrows to scroll though the recommended list of Add-On Tours for this tour.











Inclusions

- Local, licensed, English-speaking, Japanese guides
- **Travel insurance from Travel Guard**, one of the world's largest travel insurance providers, will be provided to everyone from the United States. All others will receive a \$100 per person credit and will be responsible for obtaining their own travel insurance in their own home country. (The insurance provided by Samurai Tours will cover the land portion only. Insurance to cover airfare and other additional expenses is the tour member's responsibility.)
 - Exact coverage dependent on state
 - For residents of the following states please click here for your available plan. CO, FL, IN, KS, MN, MO, MT, NY, and WA
 - For all other states and the District of Columbia click here
 - **Travel Insurance Surcharge:** Depending on your age at the time the travel insurance is purchased, you may be subject to the following surcharge for your travel insurance. Travel insurance surcharges will be due at the same time as your tour deposits. (the surcharge itself is not insured)
 - Up to 69 - \$0
 - 70-74 - \$175
 - 75-79 - \$375
 - 80-84 - \$700
 - 85+ - \$1,175
 - **Travel Insurance Opt-Out:** If you would prefer to opt out of the travel insurance, please note this at the time of registration. You will receive a \$100 credit per person, which will be reflected on your invoice. In the event that you would need to cancel your tour, cancellation penalties may apply. See the Terms and Conditions page for the Cancellation Fees Schedule.
- Domestic airfare from Hokkaido's Memanbetsu Airport to Tokyo
- Meeting service at Tokyo's Narita Airport or Tokyo's Haneda Airport and transfer to the accommodations in Tokyo
 - The meeting service will meet you at the airport and provide you a transfer to the accommodations in Tokyo
 - Meeting service can only be provided between 6am and 9pm. If you arrive at a time outside of these hours, we will need to provide alternative directions for you to get to the hotel on your own.
- Sending service to the Shinagawa station at the end of the tour
 - The sending service will escort you to the Shinagawa station and make sure you board the correct train or subway depending on the airport. The sending service will not accompany you to the airport.

For those requiring meeting or sending services on other than the scheduled arrival/departure dates, there will be a \$100 fee for the meeting service from the airport into Tokyo or the sending service to the Kyoto train station.)

- Lodging for 14 nights in Japanese-style hotels or ryokans and western style hotels
- Meals
 - Japanese-style or Western-style breakfast every morning (Please Note: Some ryokans offer Japanese breakfasts only.)
 - Japanese-style or Western-style dinner every night
- The appropriate amount of free time to allow you to explore and discover your own personal Japan.
- All transportation costs when traveling with the group. (Transportation costs during scheduled free times are the tour member's responsibility.)
- Admission fees to the destinations and activities (Itinerary specifics subject to change)

- Electronic version of itinerary
- Sayonara dinner at the end of the tour
- Baggage transfer from Tokyo to Aizu Wakamatsu (one bag only)
- Baggage transfer from Aizu Wakamatsu to Zao Onsen (one bag only)
- Baggage transfer from Zao Onsen to Tsunagi Onsen (one bag only)
- Baggage transfer from Tsunagi Onsen to Lake Akan (one bag only)
- Baggage transfer from Lake Akan to the hotel in Tokyo (one bag only)

Each tour member receives an electronic copy of our tour handbook. This handbook is full of tips and suggestions taken from our Japan travel experiences that allow you to better plan and prepare for your trip, and therefore enjoy your trip even more. The tips and suggestions included cover everything from how to save while exchanging money, what to pack, some basic Japanese-language tips, general etiquette do's-and-don'ts, ryokan customs, etc.

Exclusions

- International airfare is NOT included.
- A printed itinerary is not included
- Alcoholic beverages, soft drinks and desserts are NOT included

Thank you for downloading this PDF version of our tour. Please visit our website at www.samuraitours.com/tours for the most current dates, prices and information.

Contact Samurai Tours

WEBSITE/EMAIL

www.samuraitours.com
info@samuraitours.com

USA CONTACT INFO

Toll-free: 1-866-316-SAMURAI
 or 1-866-316-7268
 Fax number: 720-210-5423

Samurai Tours
 7900 East Union Ave, Suite
 1100
 Denver CO 80237

JAPAN CONTACT INFO

Call us: 075-361-7303

Samurai Tours

307 Yodokizu
 Fushimi
 Kyoto 613-0911 Japan

Kyoto-fu Chijitoroku

Ryokogyo 3-576/

Japanese Travel Agency License:
 Kyoto Prefecture #3-576

MEMBERSHIPS/ASSOCIATIONS

Better Business Bureau
 American Society of Travel
 Agents
 National Tour Association
 Japan National Tourist
 Organization
 JNTO-approved Japan Travel
 Specialist